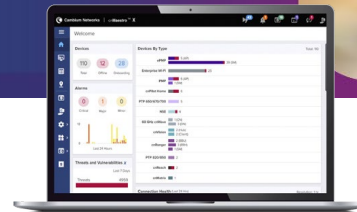


XE3-4TN Wi-Fi 6/6E Access Point

802.11ax Tri-Radio 2x2/4x4 (2+2+4) Access Point with N-type Antenna Connectors

XE3-4TN Quick Look

- Tri-radio/tri-band Wi-Fi 6/6E
- Software-defined 5 GHz/6 GHz radio
- AFC compliant for 6 GHz operation*
- 6.6 Gbps aggregate data rate
- 2.5 GbE and 1 GbE uplink ports
- Outdoor-rated IP67 enclosure



Outdoor High-Density, Future-Proof Wi-Fi

The XE3-4TN is an outdoor-rated tri-radio Wi-Fi 6/6E 2x2/4x4 access point (AP) designed to deliver future-proof performance and value for building next-generation networks. Wi-Fi 6 delivers faster and more efficient wireless network connections than previous-generation Wi-Fi technologies. Wi-Fi 6E extends the capacity of Wi-Fi into the 6 GHz band, more than tripling the wireless spectrum available.

Software-Defined Radio Provides Flexibility

The software-defined radio (SDR) provides flexibility to match the capability of the connected clients and to match the regulatory limits in the 6 GHz band. Where 6 GHz outdoor is not allowed, operate the XE3-4TN in dual 5 GHz mode to expand capacity in the allowed 5 GHz channels. Where 6 GHz outdoor is allowed, and Wi-Fi clients support it, use tri-radio mode to dramatically increase density in a reduced RF interference environment.

3-Year Warranty

The XE3-4TN comes with an industry-leading 3-year hardware warranty, providing return and repair service on the access point and multiple tiers of customer support, from the business day to extended hours and advanced replacement.

Cloud or On-premises Management

The XE3-4TN is supported by Cambium Networks' ONE Network enterprise architecture managed by the cnMaestro™ Network Management System. cnMaestro uses a distributed intelligence architecture with cloud-first management and edge-intelligent Wi-Fi that self-optimizes for the RF environment. cnMaestro delivers a single-pane-of-glass management experience for enterprise Wi-Fi APs, cnMatrix™ Ethernet Switches, NSE Service Edge, residential service provider routers, Cambium's fixed wireless access solutions, and Cambium Fiber.

*Automatic frequency coordination (AFC) is under development and will be a cloud service that will assign operating channel and power. AFC is required for 6 GHz operation outdoors.

XE3-4TN Wi-Fi 6/6E Outdoor Access Point

Access Point Specifications*			
FCC	Ch 1–11, 36–64, 100–144, 149–165	Power	Typical power 25W (802.3at) Maximum power 62W with PoE out enabled and sourcing 30W Passive PoE output: 30V or 48V nominal at up to 30 Watts
ISED	Ch 1–11, 36–64, 100–116, 149–165		
ETSI*	Ch 1–13, 36–64, 100–140, 149–173		
ROW*	Ch 1–14, 36–64, 100–144, 149–177	Dimensions	220mm x 200mm x 86mm (8.66 in x 7.87 in x 3.39 in)
6 GHz Channel	FCC/IC/ROW: Ch 1–233 EU: 1–93	Weight	2,920 g (6.44 lb)
		MTBF	498,910 hours @ 25°C 132,618 hours @ 65°C
Radios	5 GHz/6 GHz 802.11a/n/ac/ax, 4x4 SW configurable 5 GHz 802.11 a/n/ac Wave 2/ax, 2x2 2.4 GHz 802.11 b/g/n/ax, 2x2 BLE 4.1, GPS receiver	Mount Options	Pole or wall mount
		Security	Kensington lock slot
		LEDs	Multi-color status LEDs
Wi-Fi	802.11 a/b/g/n/ac/ax	Ambient Operation Temperature	-40°C to 65°C (-40°F to 149°F)
SSID Security	WPA3-SAE, WPA3-Enterprise, WPA2-PSK (CCMP, AES, 802.11i), WPA2-Enterprise (802.1x/EAP), OSEN, Owe, Open	Storage Temperature	-40°C to 70°C (-40°F to 158°F)
Max PHY Rate	5/6 GHz radio 4,804 Mbps 5 GHz radio 1,201 Mbps 2.4 GHz radio 573.5 Mbps	Humidity	95% RH non-condensing
Ports	1 x IEEE 100/1000/2500 Mbps Ethernet 1 x IEEE 10/100/1000 Mbps Ethernet with PoE out	Certifications	WiFi Alliance 80211a/b/g/n/ac/ax, PP2.0 FCC, ETSI, CE, IC, IEC60950, IEC62368, EN61373, EN50121, EN 303 413 (GPS), IEC 60068-2-5 (solar radiation), IEC 60529 (ingress protection), TAA
Max EIRP	Radio 1: 2x2 2.4 GHz = 28dBm Radio 2: 2x2 5 GHz = 28dBm Radio 3: 4x4 5 GHz/6 GHz = 25dBm The cable loss and antenna gain are separate from any radio conducted power specification. Please refer to the Antenna Guide for more details.		

*Individual country limits may apply.

XE3-4TN Wi-Fi 6/6E Outdoor Access Point

Network Specifications*

Operational Modes	Controllerless standalone Cloud-managed cnMaestro or VM	RF Management	Multi-modal RF optimization supporting AutoRF for dynamic channel selection and dynamic power adjustment configured via cnMaestro, performed in the intelligent edge AP Out-of-band RF spectrum analysis RF monitor with channel utilization/packet error rate/interference
WLAN	1,500 per AP 16 SSIDs per AP	Band Steering	Yes
Security Authentication Encryption	Open, WPA2-AES with PSK, ePSK and Enterprise WPA3 with PSK (WPA3-SAE), ePSK, Enterprise, Enterprise-CNSA, OWE (Enhanced Open) OSEN and PMF (802.11 W) MAC authentication with local database or external database using RADIUS protocol 802.1X with EAP-TTLS, EAP-TLS/MSCHAPv2, PEAPv0/PEAPv1 /EAP-PEAP/EAP-SIM/AKA/AKA'/FAST Hotspot WEB authentication	Mesh	Multi-hop, all 3 bands
Wi-Fi Quality of Service	WMM (packet marking either with 802.1p or IP DSCP), WMM-PS, U-APSD Multicast to unicast conversion	Scheduled WLAN	On/off by day, week, time of day
Service Availability	Critical network resource monitor with SSID shutdown	Data Limit	Client bitrate/time/throughput limit per SSID
Fast Roaming	802.11k/r/v, OKC, cnMaestro-assisted roam	Network	TCP connection log, NAT logging firewall, DHCP server, VLAN pooling, RADIUS attribute, VID VLAN per SSID per user, ePSK with VLAN assignment per PSK
Guest Access/Captive Portal	cnMaestro-hosted EasyPass portal Multiple authentication methods supported to onboard guest user: <ul style="list-style-type: none"> • Radius-based authentication • Click-through with simple terms and conditions acceptance • Social login using Google®, Facebook® • SMS-based authentication (X) • Voucher-based access • Microsoft® Azure AD and Google • Workspace® (X) • Sponsored guest access (X) • Self-registration access (X) cnMaestro API support for external captive portal integration 802.11u, Hotspot 2.0	Network Tools	Wired or wireless remote packet capture, logging, WAN speed test, ZapD, remote network connectivity tools
Accounting	RADIUS accounting, multiple AAA	Tunnel	L2TPv2, L2GRE, PPPoE
		VLAN	802.11Q, max 4096
		Management Interfaces	HTTP/HTTPS web interface, SSH, Telnet
		IP	IPv4, IPv6
		Security	Rogue AP detection and termination (X), WIDs/WIPs, DoS protection L2–L7 firewall with application visibility (X) and control (X), DNS-based access control (X) ACL and AirCleaner tools
		Services	Wi-Fi calling control, NTP, Syslog, DNS proxy, SNMP traps, SNMPv1, SNMPv2c, SNMPv3, TCP and DNS logging
		API	RESTful management and statistics API via cnMaestro X, presence location push APIs

*Some features will be included in subsequent firmware releases.

Standards

Wi-Fi Protocols	Data Coding support 16/64/256/1024/4096-QAM Channel width support 5GHz and 6GHz band: 20/40/80/160 MHz TWT, Long OFDM Symbol, Transmit beam steering, Airtime Fairness, AMSDU, AMPDU, RIFS, STBC, LDPC, MIMO Power Save, MRC, BPSK, QPSK, CCK, DSSS, OFDM, MU-OFDMA, UL/DL MU-MIMO, VHT rates IEEE 802.11 a/ac/ax/b/d/e/g/h/i/lj/k/n/r/s/u/v/w
------------------------	--

XE3-4TN Wi-Fi 6/6E Outdoor Access Point

Management



cnMaestro uses a distributed intelligence architecture with cloud-first management and edge-intelligent APs that self-optimize for the RF environment. cnMaestro delivers a single pane-of-glass management for Cambium broadband fixed wireless, cnMatrix Ethernet Switches, enterprise-grade Wi-Fi APs, NSE Service Edge, and residential service provider routers.

cnMaestro can be deployed on cloud or on-premises via a virtual machine.

To serve a growing market for advanced management and services functionality, Cambium Networks offers cnMaestro in two management tiers:

cnMaestro X

Paid subscription that includes:

- Advanced device management capabilities
- Deep packet inspection (DPI) application visibility and Control for 2,400+ apps
- RESTful management and statistics API
- Presence location push APIs
- Graphic reports
- Webhooks
- Cambium Care Pro for 24x7 technical support
- Accelerated access to L2 engineers and regular software updates

Assists

- Assesses the network's configuration and identifies weak security settings and proposes a fix to ensure the network configuration is up to the top security industry standards

cnMaestro Essentials

License-free cloud management that delivers a disruptive total cost of ownership (TCO) for organizations of all sizes. Includes EasyPass for OneClick or voucher-based connection as well as WiFi4EU access.

X Assurance

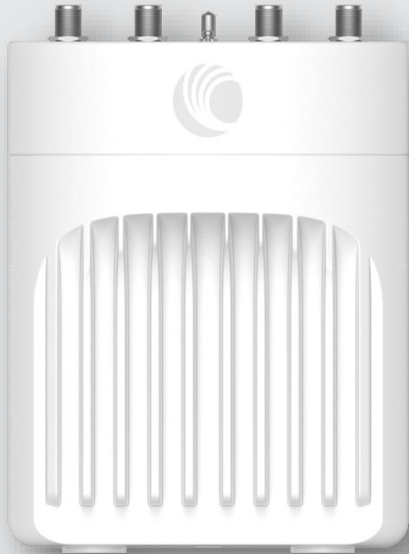
- Helps to quickly identify network-wide connectivity issues by isolating every element of the client's lifecycle, either radio or network related
- Gives an overview quality index of the network and highlights each element's contribution to easily identify the worst offender
- Provides insight of probable causes and proposes fixes for the administrator to apply
- Provides individual client connectivity visibility throughout the entire lifecycle of its connection to easily identify each connection's result and highlight the failure reason, should there be any

EasyPass Portal with Additional Options

- Self-registration: Form-based access
- Sponsored guest: Guest ambassador-based access
- Paid access: Monetize the Wi-Fi access
- Microsoft Azure: Corporate user login
- Google Login: Web login using Google accounts

**Find out more about
cnMaestro**

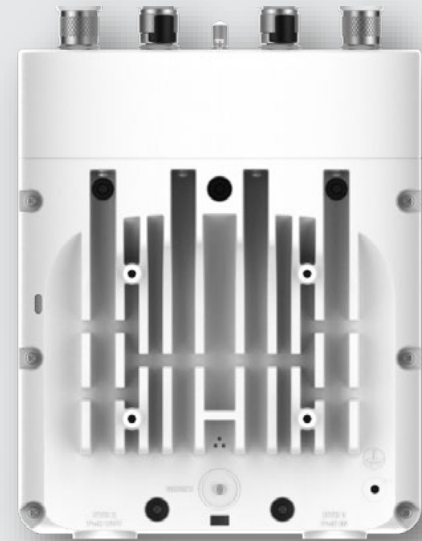
XE3-4TN Wi-Fi 6/6E Outdoor Access Point



Front



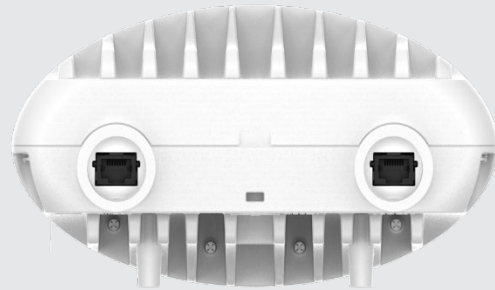
Side



Back



Top



Bottom

XE3-4TN Wi-Fi 6/6E Outdoor Access Point

XE3-4TN Ordering Information

XE3-4T	Regulatory Model
XE3-4TN0A00-US	XE3-4TN Outdoor Wi-Fi 6E 4x4 SDR Access Point, 2.5 GbE, US
XE3-4TN0A00-EU	XE3-4TN Outdoor Wi-Fi 6E 4x4 SDR Access Point, 2.5 GbE, EU
XE3-4TN0A00-RW	XE3-4TN Outdoor Wi-Fi 6E 4x4 SDR Access Point, 2.5 GbE, 6 GHz radio disabled, RW
XE3-4TN0A06-RW	XE3-4TN Outdoor Wi-Fi 6E 4x4 SDR Access Point, 2.5 GbE, 6 GHz radio enabled, RW
XE3-4TN0A00-CA	XE3-4TN Outdoor Wi-Fi 6E 4x4 SDR Access Point, 2.5 GbE, CA
C000000L141A	PoE, 60W, 56V, 10GbE DC Injector, Indoor, Energy Level 6 Supply, accepts C5 connector
N000000L034B	PoE injector, 30.5W, 56V, 5GbE DC Injector, Indoor, Energy Level 6 Supply, accepts C5 connector

Antenna Ordering Information*

ANT-OM-1X1-05	Tri-Band 2.4 GHz/5 GHz/6 GHz, 5 dBi, omni-directional 1x1 antenna with N-male connector
ANT-D30-2X2-02	Dual-band 2.4/5GHz 2x2 MIMO directional 60deg 6/7.5dBi
ANT-D35-4X4-01	Dual band 5 GHz/6 GHz, 13 dBi, 35° beamwidth 4x4 antenna with N-female connectors, bracket included, cables sold separately
ANT-D60-2X2-02	Dual-band 2.4/5GHz 2x2 MIMO directional 30deg 11.5/14dBi
ANT-D60-4X4-02	Dual band 5GHz/6GHz, 11dBi, 60 degree beamwidth 4x4 antenna with N-female connectors, bracket included, cables sold separately
ANT-GPS-01	GPS antenna
ANT-CB-10MM-03	Antenna cable N-type M to M, LMR400, 3m, qty 1 cable
ANT-CB-10MM-04	Antenna cable N-type M straight to N-type M Right Angle-LMR400, 3m, Qty 1 cable

*See XE3-4TN [Antenna Guide](#) for more details.

Download Antenna
Selection Guide

cnMaestro X Ordering Information

MSX-SUB-XE3-4TN-1	cnMaestro X for one XE3-4TN AP. Creates one Device Tier 3 slot. Includes Cambium Care Pro support. 1-year subscription
MSX-SUB-XE3-4TN-3	cnMaestro X for one XE3-4TN AP. Creates one Device Tier 3 slot. Includes Cambium Care Pro support. 3-year subscription
MSX-SUB-XE3-4TN-5	cnMaestro X for one XE3-4TN AP. Creates one Device Tier 3 slot. Includes Cambium Care Pro support. 5-year subscription

XE3-4TN Wi-Fi 6/6E Outdoor Access Point

Cambium Care Ordering Information

CCADV-SUP-XE3-4TN-1	Cambium Care Advanced, 1-year support for one XE3-4TN Wi-Fi 6/6E AP. 24x7 TAC support, SW updates, and NBD advance replacement for HW
CCADV-SUP-XE3-4TN-3	Cambium Care Advanced, 3-year support for one XE3-4TN Wi-Fi 6/6E AP. 24x7 TAC support, SW updates, and NBD advance replacement for HW
CCADV-SUP-XE3-4TN-5	Cambium Care Advanced, 5-year support for one XE3-4TN Wi-Fi 6/6E AP. 24x7 TAC support, SW updates, and NBD advance replacement for HW
CCPRO-SUP-XE3-4TN-1	Cambium Care Pro, 1-year support for one XE3-4TN Wi-Fi 6/6E AP. 24x7 TAC support and SW updates
CCPRO-SUP-XE3-4TN-3	Cambium Care Pro, 3-year support for one XE3-4TN Wi-Fi 6/6E AP. 24x7 TAC support and SW updates
CCPRO-SUP-XE3-4TN-5	Cambium Care Pro, 5-year support for one XE3-4TN Wi-Fi 6/6E AP. 24x7 TAC support and SW updates
CCADV-UPG-XE3-4TN-1	Cambium Care Advanced Add-on to cnMaestro X, 1-year support for one XE3-4TN. 24x7 TAC support, SW updates, and NBDS advance replacement for HW
CCADV-UPG-XE3-4TN-3	Cambium Care Advanced Add-on to cnMaestro X, 3-year support for one XE3-4TN. 24x7 TAC support, SW updates, and NBDS advance replacement for HW
CCADV-UPG-XE3-4TN-5	Cambium Care Advanced Add-on to cnMaestro X, 5-year support for one XE3-4TN. 24x7 TAC support, SW updates, and NBDS advance replacement for HW

LIMITED WARRANTY

Cambium Networks XE3-4TN Wi-Fi 6/6E Access Point includes
a 3-year hardware warranty.

ABOUT CAMBIUM NETWORKS

Cambium Networks enables service providers, enterprises, industrial organizations, and governments to deliver exceptional digital experiences and device connectivity with compelling economics. Our ONE Network platform simplifies management of Cambium Networks' wired and wireless broadband and network edge technologies. Our customers can focus more resources on managing their business rather than the network. We make connectivity that just works.

cambiumnetworks.com