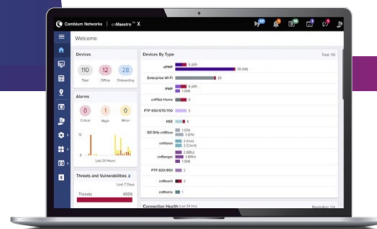


cnMatrix EX3000 Series Switches

EX3000 Series Quick Look

- Zero-touch deployments
- Policy-based automation
- Auto-device profiling and segmentation
- Non-blocking, line-rate architecture with fully featured L2/L3 switching



Cloud-Managed, Secure, Enterprise-Grade Switching

Cambium Networks' next-generation switching platform offers a cloud-managed, high-performance, feature-rich, enterprise-grade ethernet switching solution.

The cnMatrix™ platform of switches provides:

- Easy and simple, free cloud (or on-premise) management with cnMaestro™ Network Management.
- Zero-touch deployment of switches makes installation easy.
- Policy-based automation eliminates manual and time consuming configuration, during adds, moves, and changes of network devices.
- Enhanced security with automated device profiling and segmentation.
- Unified wired-wireless access solution.

The cnMatrix series of fully managed switches delivers full Layer 2 and Layer 3 capabilities with enhanced access security. Depending on the model, the cnMatrix EX3000 Series offers flexibility with SFP+ (10 Gbps) fiber uplink ports. Some switches support SFP-28 (25 Gbps). The EX3000 series also comes with dual removable power supplies and features up to 60W/90W of PoE per port. These switches come with a 5-year limited lifetime warranty.



cnMatrix EX30xxR-P & EX30xxRM-P Series Switches

Access Point Specifications

	EX3028R-P	EX3052R-P	EX3030RM-P	EX3052RM-P
Throughput	128 Gbps	176 Gbps	420 Gbps	368 Gbps
Forwarding Rate in Mpps (64 Byte Packets)	120	120	120	120
Packet Buffer	1.5 MB	1.5 MB	1.5 MB	1.5 MB
10/100/1000 Ports	24	48	0	24
2.5 G Ports	n/a	n/a	24	24
Energy Efficient Ethernet	✓	✓	✓	✓
Uplink Ports	4 SFP+	4 SFP+	6 SFP28	4 SFP28
PoE+ Enabled Ports 802.3af/at/bt (30W)	12	24	0	24
PoE++ Enabled Ports 802.3af/at/bt (60W)	12	24	0	0
PoE++ Enabled Ports 802.3af/at/bt (90W)	0	0	24	24
Serial Console	✓	✓	✓	✓
USB	✓	✓	✓	✓
Out-of-Band Management Port	✓	✓	✓	✓
Rack Mount Kit	✓	✓	✓	✓
Internal Fans	2	2	3	3
Reset Button	✓	✓	✓	✓
MAC Address Table Size	16K	16K	32K	32K
Flash Storage	256 MB	256 MB	256 MB	256 MB
DRAM	1 GB	1 GB	1 GB	1 GB
VLANs (simultaneous)	4K	4K	4K	4K
QinQ	Yes	Yes	Yes	Yes
LACP/Trunking	8 LAGs/8 links per 8 LAGs/8 links per LAG			
QoS Priority Queues	8	8	8	8
PVRST	64	64	64	64
Ingress/Egress ACL	512	512	512	512
Static ARP Entries	512	512	512	512
ARP Entries	1000	1000	1000	1000
Static Routes	64	64	64	64
Dynamic Routing	512	512	512	512
IGMP Multicast Groups	512	512	512	512
Policy Based Automation	✓	✓	✓	✓

cnMatrix EX30xxR-P & EX30xxRM-P Series Switches

Specifications – All Models

Quality of Service	<ul style="list-style-type: none"> ACL mapping/marking of ToS/DSCP (COS) ACL mapping marking of 802.1p ACL mapping to priority queue DiffServ support Honoring DSCP and 802.1p (CoS) Traffic shaping/metering Priority queue management using Weighted Round Robin (WRR), Strict Priority (SP) and a combination of WRR and SP 	Layer 2 Feature Set	<ul style="list-style-type: none"> 802.1d, RSTP, 802.1s - MSTP, PVRST VLAN, port, protocol, 802.1q QinQ 802.1x authentication Auto MDI/MDIX BPDU guard, root guard, loop guard IGMP snooping v1/v2/v3*, fast leave IGMP proxy LLDP/LLDP MED Static MAC Flow control per port Port mirroring: Port based, ACL based, VLAN based Port isolation/private VLAN edge Link aggregation groups (static/LACP) Rate limiting/storm control Jumbo frame (9K) DHCP snooping BPDU filtering Broadcast/multicast/unlearned unicast (storm control) DoS protection Ping/TraceRoute/ICMPv6
Traffic Management	<ul style="list-style-type: none"> ACL-based inbound rate-limiting policies Broadcast, multicast, and unknown unicast rate limiting Inbound rate limiting per port Outbound rate limiting per port/queue 		
Security	<ul style="list-style-type: none"> 802.1x authentication MAC authentication/MAB Guest VLAN/failover VLAN authorization Local & radius authentication/authorization Radius/Tacacs/Tacacs+ Secure shell Secure copy (SCP) Local username/password Port security DHCP snooping Dynamic ARP inspection 		
Security (ACL) <small>Permit/deny actions for inbound IP and layer 2 traffic classification based on:</small>	<ul style="list-style-type: none"> Source/destination IP address TCP/UDP source/destination port IP protocol type Type of Service (ToS) or differentiated services (DSCP) field Source/destination MAC address EtherType IEEE 802.1p user priority VLAN ID RFC 1858—Security considerations for IP fragment filtering 	Layer 3 Feature Set	<ul style="list-style-type: none"> Inter-VLAN routing Static ARPs Static routes DHCP relay w/multiple helpers per VLAN Dynamic routing – RIPv1/v2 Dynamic routing – OSPFv2 Route redistribution Dynamic ARP inspection
Management	<ul style="list-style-type: none"> cnMaestro Industry standard Command Line Interface (CLI) DHCP client Embedded web management (HTTP/HTTPS) Embedded DHCP server USB file management and storage 	<ul style="list-style-type: none"> Out-of-band Ethernet management SSH/SSH v2 SNMP v1/v2/v3 DHCP relay Simple Network Time Protocol (SNTP) Local/remote system logging Policy-based automation 	<ul style="list-style-type: none"> Display log messages multiple terminals* TFTP/SFTP Telnet client/server IPv6 management Password management Auto-install support for firmware images and config files*

* Feature to be included in a future release.

cnMatrix EX30xxR-P & EX30xxRM-P Series Switches

Hardware Specifications

	EX3028R-P	EX3052R-P	EX3030RM-P	EX3052RM-P
Power Supply	CRPS dependent	CRPS dependent	CRPS dependent	CRPS dependent
Max Switch Power (with Traffic)	61W	82.5W	TBD	TBD
MTBF (Hours)	547,054	471,517	TBD	TBD
Flash Storage	256 MB	256 MB	256 MB	256 MB
DRAM	1 GB	1 GB	1 GB	1 GB
Weight	3.679 kg (8.11 lb)	4.904 kg (10.81 lb)	TBD	TBD
Dimensions	4.44 x 28 x 44.15 cm (1.73 x 11.02 x 17.38 in)	4.4 x 39.4 x 44.15 cm (1.73 x 15.51 x 17.38 in)	TBD	TBD
CPU Speed	800 MHz	800 MHz	TBD	TBD
LEDs per Port	Link/Activity, PoE	Link/Activity, PoE	TBD	TBD
PoE+ Power Budget	CRPS	CRPS	CRPS	CRPS
PoE + Voltage	54V	54V	54V	54V
PoE Max Power per Port	30W, 60W	30W, 60W	30W, 90W	30W, 90W
Rack Mountable	Yes 1U	Yes 1U	Yes 1U	Yes 1U
Temperature Ranges	0° to 50°C (32° to 122°F)	0° to 50°C (32° to 122°F)	0° to 50°C (32° to 122°F)	0° to 50°C (32° to 122°F)
Operating Humidity	55° at 95% RH	55° at 95% RH	TBD	TBD
Storage Temperature	-40° to 70°C (-40° to 158°F)	-40° to 70°C (-40° to 158°F)	TBD	TBD

Acoustic Noise dBA per Switch (Ambient Temperature)

EX3028R-P	1200W CRPS 73.3dB <-33C, 73.4dB 30C-40C, 73.6dB >43C 930W CRPS 71dB <-33C, 71.2dB 30C-40C, 71.5dB >43C 600W CRPS 69.9dB <-33C, 70dB 30C-40C, 70.4dB >43C
EX3052R-P	1200W CRPS 76.4dB <-33C, 76.5dB 30C-40C, 76.96dB >43C 930W CRPS 72.8dB <-33C, 73dB 30C-40C, 73.3dB >43C 600W CRPS 72dB <-33C, 72.2dB 30C-40C, 72.5dB >43C

cnMatrix EX30xxR-P & EX30xxRM-P Series Switches

IEEE Standards

Core Switching Features	IEEE 802.1ab—Link Layer Discovery Protocol (LLDP) IEEE 802.1D—Spanning tree compatibility IEEE 802.1p—Ethernet priority with user provisioning and mapping IEEE 802.1s—Multiple spanning tree compatibility IEEE 802.1Q—Virtual LANs with port-based VLANs IEEE 802.1X—Port-based authentication 802.3az—Energy-efficient Ethernet	Advanced Layer 2 Features	Authentication, Authorization, and Accounting* (AAA) IEEE 802.1ad (QinQ) Broadcast/Multicast/Unknown unicast storm recovery DHCP Snooping IGMP Snooping Querier Independent VLAN Learning (IVL) support Jumbo Ethernet frame support Port MAC locking Port mirroring Protected ports Static MAC filtering
VLAN Support	IEEE 802.1W—Rapid spanning tree compatibility IEEE 802.3—10BASE-T IEEE 802.3u—100BASE-T IEEE 802.3ab—1000BASE-T IEEE 802.3ac—VLAN tagging IEEE 802.3ad—Link aggregation IEEE 802.3x —Flow control Bridged Local Area Networks - Amendment 07: Multiple Registration Protocol	Layer 3 Features	Inter-VLAN Routing Static ARP Static Routes RFC 2131 – DHCP Relay RFC 2328 – OSPF Version 2 RFC 2453 – RIP Version 2 PIM-SM – Multicast routing
IEEE 802.1Q-2003	RFC 4541—Considerations for Internet Group Management Protocol (IGMP) Snooping switches ANSI/TIA-1057—LLDP-MEDia Endpoint Discovery (MED)		

*Feature to be included in a future release.

cnMatrix EX30xxR-P & EX30xxRM-P Series Switches

System Facilities

Event and error logging facility	RFC 896—Congestion control in IP/TCP networks	RFC 2132—DHCP options and BOOTP vendor extensions
Run-time and configuration download capability	RFC 951—BOOTP	RFC 2819—Remote Network Monitoring Management Information Base
PING utility	RFC 1034—Domain names - concepts and facilities	RFC 2865—RADIUS client
FTP Transfers via IPv4/IPv6	RFC 1035—Domain names - implementation and specification	RFC 2869—RADIUS Extensions
RFC 768—UDP	RFC 1321—Message digest algorithm	RFC 3579—RADIUS support for EAP
RFC 783—TFTP	RFC 1534—Interoperability between BOOTP and DHCP	RFC 3580—IEEE 802.1X RADIUS usage guidelines
RFC 791—IP	RFC 2021—Remote network monitoring management information base version 2	RFC 3164—BSD syslog protocol
RFC 792—ICMP	RFC 2030—Simple Network Time Protocol (SNTP)	RFC 3580—802.1X RADIUS Usage Guidelines
RFC 793—TCP		
RFC 826—ARP		
RFC 894—Transmission of IP datagrams over Ethernet networks		

Management

SNMP v1, v2, and v3	RFC 4716—SECSH public key file format	RFC 2818—HTTP over TLS
SSH 1.5 and 2.0	RFC 4419—Diffie-Hellman group exchange for SSH transport layer protocol	RFC 3268—AES cipher suites for transport layer security
RFC 4252—SSH authentication protocol	SSL 3.0 and TLS 1.0	Telnet
RFC 4253—SSH transport layer protocol	RFC 2246—TLS protocol, version 1.0	Web GUI
RFC 4254—SSH connection protocol		
RFC 4251—SSH protocol architecture		

SNMP MIBs

Enterprise MIBs for Full Configuration Support of Switching Features	RFC 1213—MIB II	RFC 2674—VLAN MIB	RFC 3273—RMON groups 1, 2, and 3
	RFC 1493—Bridge MIB	RFC 2737—Entity MIB version 2*	RFC 3291—Textual conventions for internet network addresses
	RFC 1612—DNS resolver MIB extensions	RFC 1213 MIB II	RFC 3434—RMON Groups 1, 2, and 3
	RFC 1643—Definitions of managed objects for Ethernet-like interface types	RFC 2819—RMON groups 1, 2, 3, and 9	RFC 4022—TCP-MIB
	RFC 2233—Interfaces group MIB using SMI v2	RFC 2863—IF-MIB	RFC 4113—UDP-MIB
	RFC 2613—SMON MIB	RFC 2925—Definitions of managed objects for remote ping, traceroute, and lookup operations	
	RFC 2618—RADIUS authentication client MIB		

Quality of Service MIBs	MIBs for full configuration support of DiffServ, ACL, and Cos functionality
	RFC 3289—Management information base for DiffServ architecture (read-only)

* Feature to be included in a future release.

cnMatrix EX30xxR-P & EX30xxRM-P Series Switches

Quality of Service

Classify Traffic Based on Same Criteria as ACLs and Optionally

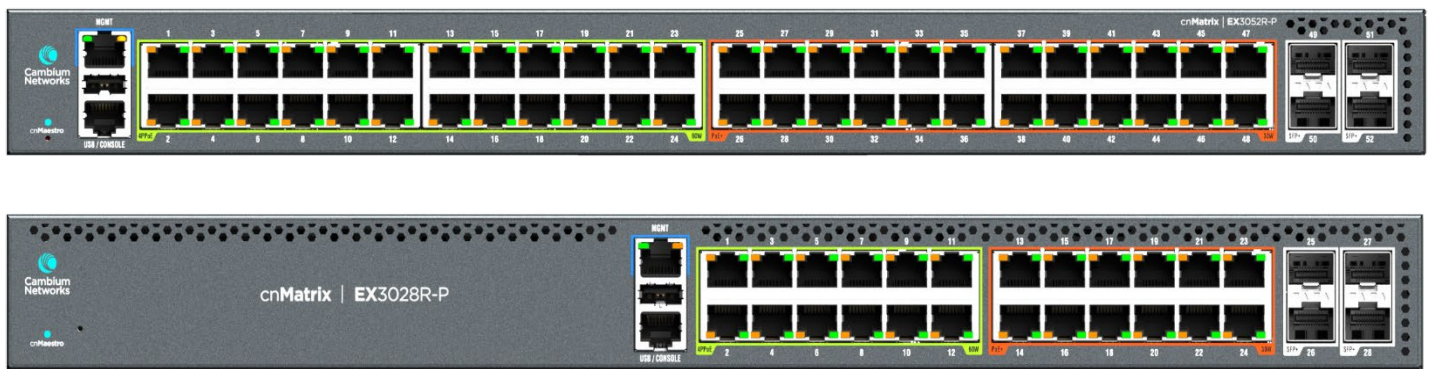
Mark the IP DSCP or precedence header fields

Police the flow to a specific rate with two-color aware support

RFC 2474—Definition of the differentiated services field (DS field) in the IPv4 and IPv6 headers

RFC 2475—An architecture for differentiated services

RFC 2597—Assured forwarding per-hop behavior



EX3028R-P



EX3052R-P / CRPS

cnMatrix EX30xxR-P & EX30xxRM-P Series Switches

cnMatrix Ordering Information		
Type	Part #	Description
EX3028R-P	MXEX3028GxPA10	Intelligent Ethernet Switch, 24 1G (12 PoE+ ports and 12 4PPoE ports (60W)) and 4 SFP+ ports, Dual/Removeable power supplies (not included) No power cord, non-USA
EX3052R-P	MXEX3052GxPA10	Intelligent Ethernet Switch, 48 1G (24 PoE+ ports and 24 4PPoE ports(60W)) and 4 SFP+ ports, Dual/Removeable power supplies (not included) No power cord, non-USA
EX3028R-P	MXEX3028GxPA11	Intelligent Ethernet Switch, 24 1G (12 PoE+ ports and 12 4PPoE ports (60W)) and 4 SFP+ ports, Dual/Removeable power supplies (not included) No power cord, USA only
EX3052R-P	MXEX3052GxPA11	Intelligent Ethernet Switch, 48 1G (24 PoE+ ports and 24 4PPoE ports (60W)) and 4 SFP+ ports, Dual/Removeable power supplies (not included) No power cord, USA only
CRPS	MXCRPSAC600A0	600W total Power, no power cord
CRPS	MXCRPSAC930A0	930W total Power, no power cord
CRPS	MXCRPSAC1200A0	1200W total Power, no power cord
CRPS	MXCRPSDC600A0	600W total Power, 36v–72v, includes 3m cable connector
CRPS	MXCRPSDC930A0	930W total Power, 36v–72v, includes 3m cable connector
CRPS	MXCRPSDC1200A0	1200W total Power, 36v–72v, includes 3m cable connector
Power Cord	N000900L092A	AC line cord, US Type B, 15A, 1.2 m C13 connector
Rack Ears	MX-EXTXFULLA-1	cnMatrix rack mount kit: Full-width switch
Transceiver	SFP-10G-SR	10G SFP+ MMF SR Transceiver, 850 nm. -40°C to 85°C (-40°F to 185°F)
Transceiver	SFP-1G-SX	1G SFP MMF SX Transceiver, 850 nm. -40°C to 85°C (-40°F to 185°F)
Transceiver	SFP-10G-LR	10G SFP+ SMF LR Transceiver, 1310 nm. -40°C to 85°C (-40°F to 185°F)
Transceiver	SFP-1G-LX	1G SFP SMF LX Transceiver, 1310 nm. -40°C to 85°C (-40°F to 185°F)
Transceiver	SFP-1G-Copper	1000Base-T (RJ45) SFP Transceiver. -40°C to 85°C (-40°F to 185°F)
Transceiver	SFP-10G-Copper	10G Base-T (RJ45) SFP Transceiver. 0°C to 70°C (-40°F to 185°F)

cnMaestro X Ordering Information		
Type	Part #	Description
cnMaestro X for EX3028R-P	MSX-SUB-3028R-P-1	cnMaestro X for one EX3028R-P. Creates one Device Tier20 slot. Includes Cambium Care Pro support. 1-year subscription
cnMaestro X for EX3028R-P	MSX-SUB-3028R-P-3	cnMaestro X for one EX3028R-P. Creates one Device Tier20 slot. Includes Cambium Care Pro support. 3-year subscription
cnMaestro X for EX3028R-P	MSX-SUB-3028R-P-5	cnMaestro X for one EX3028R-P. Creates one Device Tier20 slot. Includes Cambium Care Pro support. 5-year subscription
cnMaestro X for EX3052R-P	MSX-SUB-3052R-P-1	cnMaestro X for one EX3052R-P. Creates one Device Tier20 slot. Includes Cambium Care Pro support. 1-year subscription
cnMaestro X for EX3052R-P	MSX-SUB-3052R-P-3	cnMaestro X for one EX3052R-P. Creates one Device Tier20 slot. Includes Cambium Care Pro support. 3-year subscription
cnMaestro X for EX3052R-P	MSX-SUB-3052R-P-5	cnMaestro X for one EX3052R-P. Creates one Device Tier20 slot. Includes Cambium Care Pro support. 5-year subscription

cnMatrix EX30xxR-P & EX30xxRM-P Series Switches

EX3028R-P Cambium Care Advanced Ordering Information	
Part #	Description
CCADV-SUP-EX3028R-P-1	Cambium Care Advanced, 1-year support for one EX3028R-P. 24x7 TAC support, SW updates, and NBDS advance replacement for HW
CCADV-SUP-EX3028R-P-3	Cambium Care Advanced, 3-year support for one EX3028R-P. 24x7 TAC support, SW updates, and NBDS advance replacement for HW
CCADV-SUP-EX3028R-P-5	Cambium Care Advanced, 5-year support for one EX3028R-P. 24x7 TAC support, SW updates, and NBDS advance replacement for HW
CCADV-UPG-EX3028R-P-1	Cambium Care Advanced Add-on to cnMaestro X, 1-year support for one EX3028R-P. 24x7 TAC support, SW updates, and NBDS advance replacement for HW
CCADV-UPG-EX3028R-P-3	Cambium Care Advanced Add-on to cnMaestro X, 3-year support for one EX3028R-P. 24x7 TAC support, SW updates, and NBDS advance replacement for HW
CCADV-UPG-EX3028R-P-5	Cambium Care Advanced Add-on to cnMaestro X, 5-year support for one EX3028R-P. 24x7 TAC support, SW updates, and NBDS advance replacement for HW
CCADV-UPG-RNW-EX3028R-P-1	Cambium Care Advanced Add-on to cnMaestro X, 1-year support renewal for one EX3028R-P. 24x7 TAC support, SW updates, and NBDS advance replacement for HW
CCADV-UPG-RNW-EX3028R-P-3	Cambium Care Advanced Add-on to cnMaestro X, 3-year support renewal for one EX3028R-P. 24x7 TAC support, SW updates, and NBDS advance replacement for HW
CCADV-UPG-RNW-EX3028R-P-5	Cambium Care Advanced Add-on to cnMaestro X, 5-year support renewal for one EX3028R-P. 24x7 TAC support, SW updates, and NBDS advance replacement for HW

EX3052R-P Cambium Care Advanced Ordering Information	
Part #	Description
CCADV-SUP-EX3052R-P-1	Cambium Care Advanced, 1-year support for one EX3052R-P. 24x7 TAC support, SW updates, and NBDS advance replacement for HW
CCADV-SUP-EX3052R-P-3	Cambium Care Advanced, 3-year support for one EX3052R-P. 24x7 TAC support, SW updates, and NBDS advance replacement for HW
CCADV-SUP-EX3052R-P-5	Cambium Care Advanced, 5-year support for one EX3052R-P. 24x7 TAC support, SW updates, and NBDS advance replacement for HW
CCADV-UPG-EX3052R-P-1	Cambium Care Advanced Add-on to cnMaestro X, 1-year support for one EX3052R-P. 24x7 TAC support, SW updates, and NBDS advance replacement for HW
CCADV-UPG-EX3052R-P-3	Cambium Care Advanced Add-on to cnMaestro X, 3-year support for one EX3052R-P. 24x7 TAC support, SW updates, and NBDS advance replacement for HW
CCADV-UPG-EX3052R-P-5	Cambium Care Advanced Add-on to cnMaestro X, 5-year support for one EX3052R-P. 24x7 TAC support, SW updates, and NBDS advance replacement for HW
CCADV-UPG-RNW-EX3052R-P-1	Cambium Care Advanced Add-on to cnMaestro X, 1-year support renewal for one EX3052R-P. 24x7 TAC support, SW updates, and NBDS advance replacement for HW
CCADV-UPG-RNW-EX3052R-P-3	Cambium Care Advanced Add-on to cnMaestro X, 3-year support renewal for one EX3052R-P. 24x7 TAC support, SW updates, and NBDS advance replacement for HW
CCADV-UPG-RNW-EX3052R-P-5	Cambium Care Advanced Add-on to cnMaestro X, 5-year support renewal for one EX3052R-P. 24x7 TAC support, SW updates, and NBDS advance replacement for HW

cnMatrix EX30xxR-P & EX30xxRM-P Series Switches

EX3052R-P Cambium Care Pro Ordering Information	
Part #	Description
CCPRO-SUP-EX3028R-P-1	Cambium Care Pro, 1-year support for one EX3028R-P. 24x7 TAC support, SW updates
CCPRO-SUP-EX3028R-P-3	Cambium Care Pro, 3-year support for one EX3028R-P. 24x7 TAC support, SW updates
CCPRO-SUP-EX3028R-P-5	Cambium Care Pro, 5-year support for one EX3028R-P. 24x7 TAC support, SW updates
CCPRO-SUP-EX3052R-P-1	Cambium Care Pro, 1-year support for one EX3052R-P. 24x7 TAC support, SW updates
CCPRO-SUP-EX3052R-P-3	Cambium Care Pro, 3-year support for one EX3052R-P. 24x7 TAC support, SW updates
CCPRO-SUP-EX3052R-P-5	Cambium Care Pro, 5-year support for one EX3052R-P. 24x7 TAC support, SW updates

ABOUT CAMBIUM NETWORKS

Cambium Networks enables service providers, enterprises, industrial organizations, and governments to deliver exceptional digital experiences and device connectivity with compelling economics. Our ONE Network platform simplifies management of Cambium Networks' wired and wireless broadband and network edge technologies. Our customers can focus more resources on managing their business rather than the network. We make connectivity that just works.

cambiumnetworks.com

01032025