

# StarterDish™ 24 UM

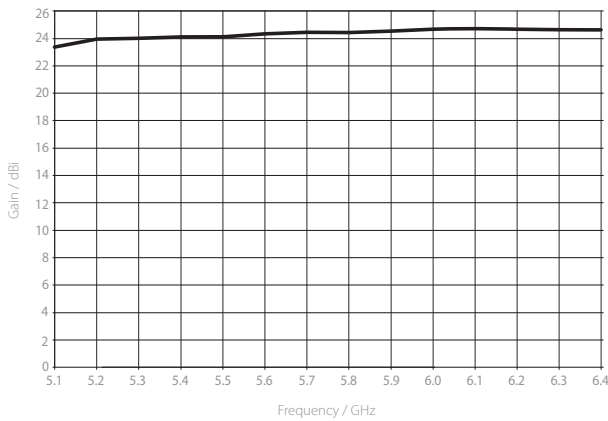
## DIRECTIONAL PARABOLIC DISH ANTENNA

StarterDish™ antennas are designed for CPE applications. Antenna is light weight with their reflector made of steel. StarterDish™ antennas provide excellent beam performance in cost effective package. Antennas are easy to assemble and come in highly economical 5 packs.

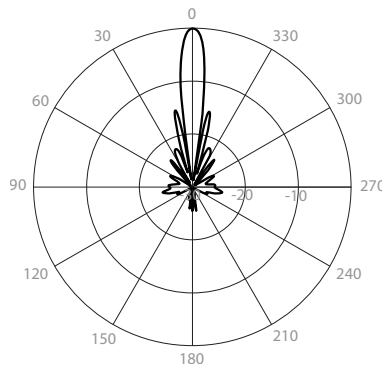
Warning: harsh environment (coastal areas, chimney gases, chemical factories, volcanos) may cause premature oxidation of the StarterDish™ antenna body. For deployments in harsh environment we recommend using UltraDish™ antennas.



Gain H

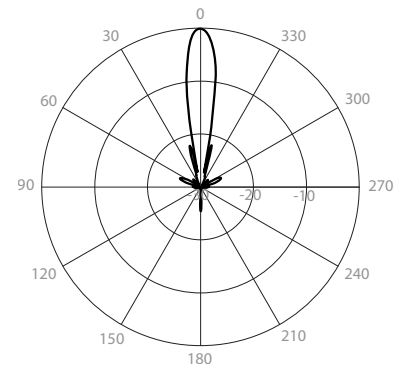


Azimuth Pattern H



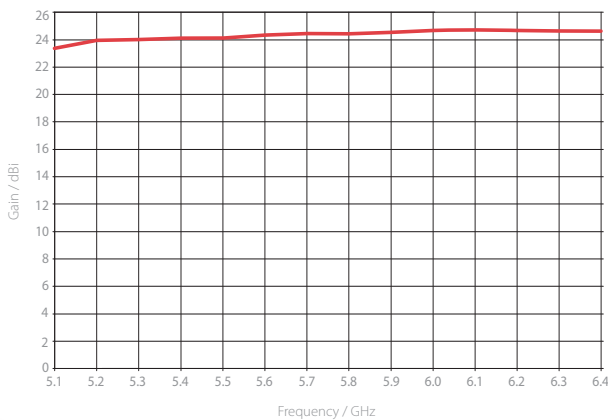
H - Port Pattern Azimuth 5.6 GHz

Elevation Pattern H

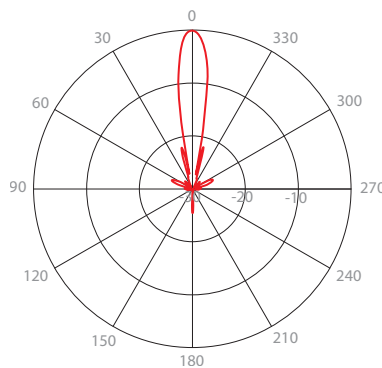


H - Port Pattern Elevation 5.6 GHz

Gain V

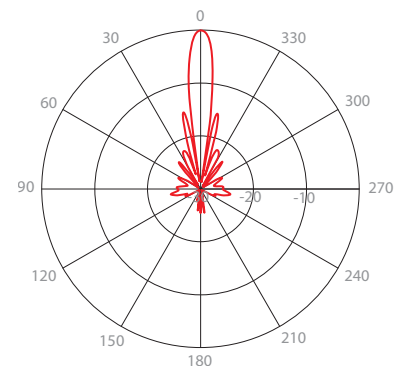


Azimuth Pattern V



V - Port Pattern Azimuth 5.6 GHz

Elevation Pattern V



V - Port Pattern Elevation 5.6 GHz

**PHYSICAL**

Antenna Connection	Waveguide Port
Antenna Type	Parabolic Dish
Materials	UV Resistant ABS Plastic, Aluminium, Steel, Zinc Plated Steel & Stainless Steel Hardware
Environmental	IP65
Pole Mounting Diameter	20-55 mm (0.8-2.1 inch) Recommended as close to 55 mm (2.1 inch) as possible
Temperature	-35°C to +55°C (-31°F to +131°F)
Wind Survival	160 km/h (100 mi/h)
Wind Load	150/22 N - Front/Side at 160 km/h (100 mi/h)
Effective Projected Area	1234/182 cm <sup>2</sup> - Front/Side (191.3/28.2 in <sup>2</sup> )
Mechanical Adjustment	± 15° Elevation
Weight	1.5 kg (3.3 lbs) – single unit 10.5 kg (23.1 lbs) – 5PACK (5 units) incl. package
Dimensions	Retail Box 5PACK: 695 x 447 x 110 mm (27.3 x 17.5 x 4.3 inch)

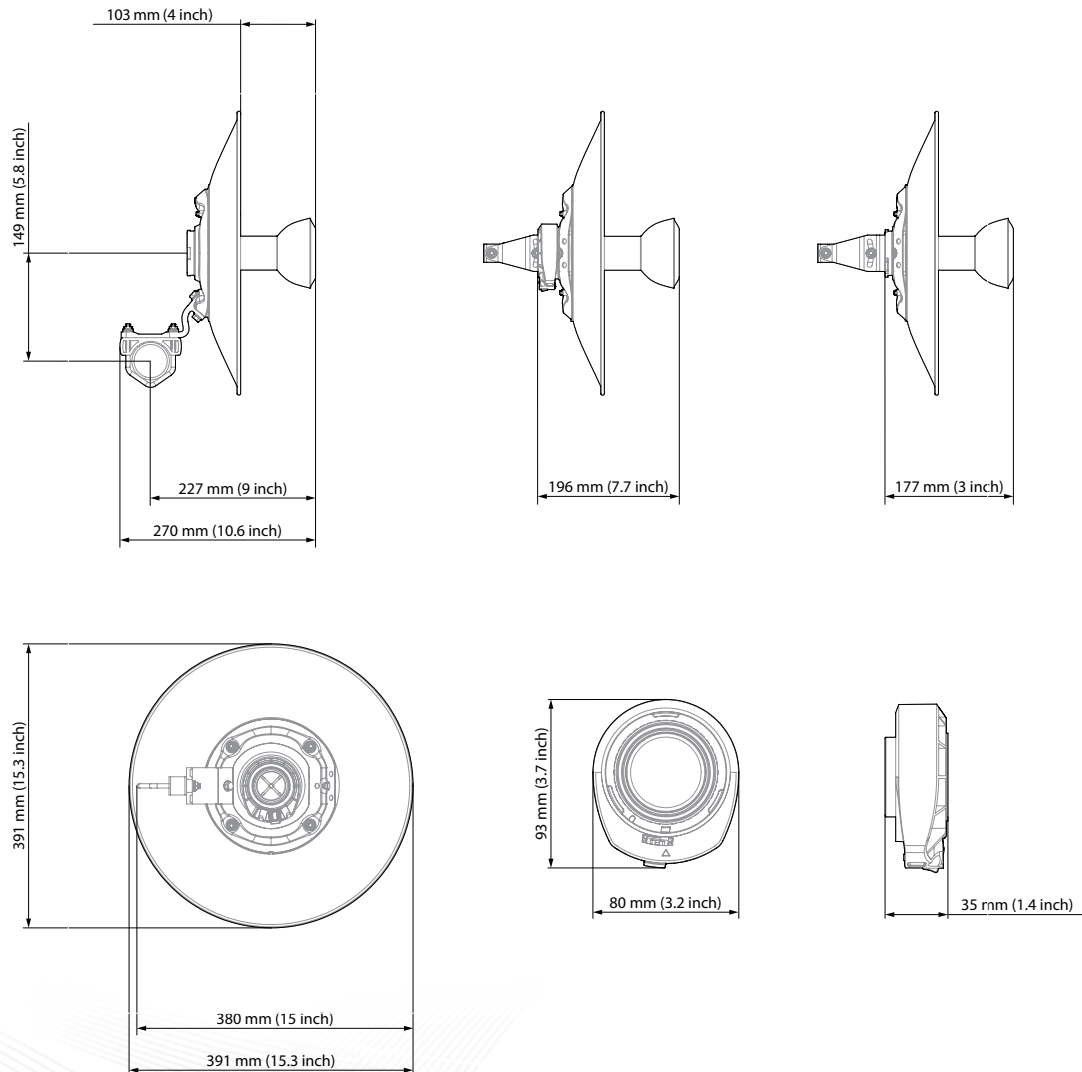
**PERFORMANCE**

Gain	24 dBi
Frequency Range	5150 - 6400 MHz*
Azimuth Beam Width -6 dB	H 12° / V 12°
Elevation Beam Width -6 dB	H 12° / V 12°
Azimuth Beam Width -3 dB	H 8° / V 8°
Elevation Beam Width -3 dB	H 8° / V 8°
Beam Efficiency**	34%
Front-to-Back Ratio (Min)	27 dB

**COMPATIBLE WIRELESS PLATFORMS**

RF elements®	StarterAdapter™ SMA
Mimosa® by Airspan	C5x
Ubiquiti Networks®	PrismStation™ 5AC, IsoStation™ 5AC, IsoStation™ M5

**PRODUCT DIMENSIONS**



\* We strongly recommend that users do not operate radios outside of the specified frequency range. \*\*Main beam defined up to first null



This product was produced under the conditions of a certified management system that meets the requirements of the ISO 9001, ISO 14001 and ISO 45001 standard, while this system was certified by QSCert.