

# RouterBOARD POE-CON-HP

## 48 to 24V PoE Converter

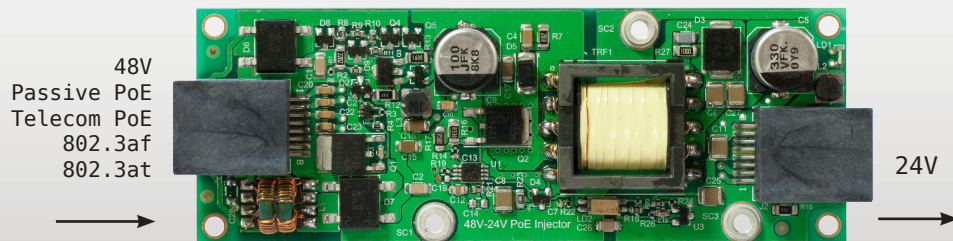
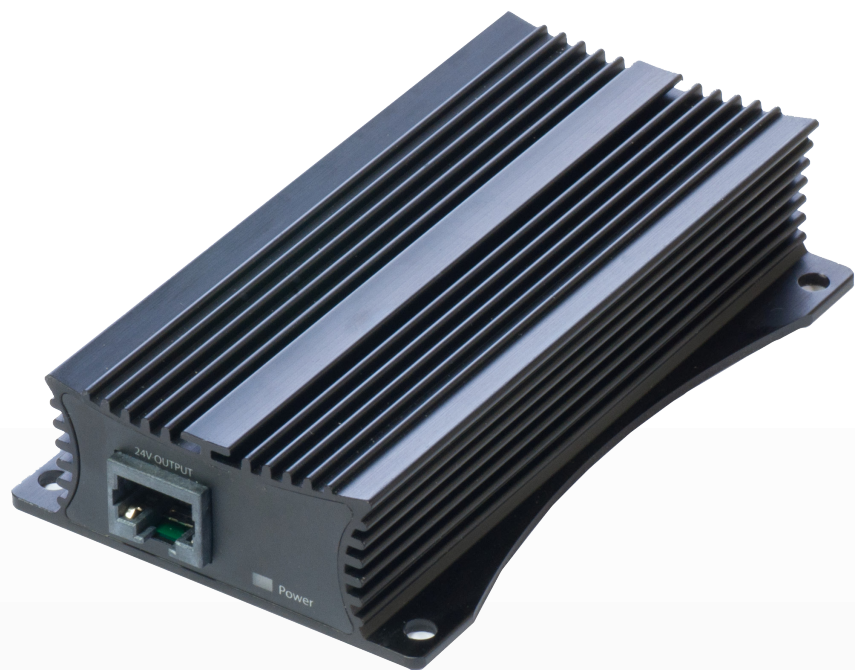
This device lets you use any 48V PoE source (including Passive PoE, Telecom PoE, 802.3af and 802.3at) to power RouterBOARD devices.

Simply plug any 48V PoE powered ethernet cable into one port, and any 8-30V capable RouterBOARD device into the other. This device is capable to provide high power output - up to 24W (up to 1A at 24V).

You can power it with virtually any 42-57V PoE solutions available on market today (Passive, Telecom, 802.3af and 802.3at PoE plus supported)

The device is a rugged metallic design, with high capacity components and integrated heatsink design. The case also has mounting holes so you can attach it to a wall.

Ethernet shield pins are inside the Ethernet connectors, so that shielded ethernet can be used, to ground either at the converter itself, or at the devices at both ends.



Name	RouterBOARD POE-CON-HP
Ethernet	Two Ethernet ports with grounding pins (Works also with Gigabit devices, but only at 10/100 speed)
Dimensions	107x66x24mm
Power Input	42-57V (Passive, Telecom, 802.3af and 802.3at PoE plus supported)
Power Output	24V 1A
Output pins	4,5 "+"; 7,8 "-"